

Call for Applications to the International Invited Design Competition for Ecological and Leisure-cultural Waterfront Space in Seoul International District

Guidelines for Submitting Request for Qualifications(RFQ)

The Seoul Metropolitan Government plans to organize the International Invited Design Competition for the Ecological and Leisure-cultural Waterfront Space in Seoul International District in an effort to create a leisure-cultural waterfront space along Tancheon Stream and Han River within the Seoul International District.

As the first stage of this design competition, we invite applicants to submit their Request for Qualifications (RFQ) for the shortlisting process.

1. Eligibility

- To participate, a team must be comprised of professionals (individuals or firms) including major disciplines.
- Requirements for a team composition
 - Multi-disciplinary team composed of relevant fields of urban planning/design, architecture, civil engineering*, ecological environment**, transportation, etc.
 - *Civil engineering : Water resources engineering, structural engineering, etc.
 - **Ecological environment : Landscape architecture, environment, etc.
 - A team should decide a lead designer (or firm) that is best qualified to the design goals and specify the reason in RFQ submission.

2. RFQ (Request for Qualifications) Submission

Date: Aug. 23 (Fri.), 2019. Between 10:00~17:00 (KST)

Method of Submission: by visit at 5th Floor, Premier Place Bldg., Cheonggyecheon-ro 8, Joong-gu, Seoul, Korea (Southeast Area Project Division, Regional Development Headquarters, Seoul Metropolitan Government)

3. Team Selection Criteria

- ① Basic design concept & understanding of the project (50%)
- ② Fitness of team composition & organization (35%)
- ③ Prior experience in comparable project (15%)

※ For more detail, please refer to the website (<http://project.seoul.go.kr>)

We look forward to a wide array of professionals (individuals or firms) participating in the call for applicants to the International Invited Design Competition for Ecological and Leisure-cultural Waterfront Space in Seoul International District.

July 29, 2019

Director-General of Region Development Headquarters, Seoul Metropolitan Government | Sun Soon Kim
Professional Advisor of the International Invited Design Competition for Ecological and Leisure-cultural Waterfront Space in Seoul International District | Byunggeun Kang

※ This project is implemented by the public contributions of the GBC project.

[Competition Overview]

1. Background

- The Seoul Metropolitan Government is in the process of developing the Seoul International District along the area spanning COEX and Jamsil Sports Complex, with the goal of creating a platform that can drive future growth. The waterfront spaces of Han River and Tancheon Stream, which flows through the center of this area, have significant potential as an urban leisure and cultural place for citizens. However, this potential remains untapped and these areas are used to serve simple functions as, for examples, parking lots, embankment slopes, and overpasses.
- Moreover, there is an ecological disconnect between Han River and Tancheon Stream because the drop structures installed at the mouth of Tancheon Stream cause sediments to accumulate, taking a toll on water quality and giving off an unpleasant odor. It is hard for visitors to access and utilize the project site from nearby areas due to the radical drop offs and roads placed in between. In addition, the Han Riverside is not utilized to its full potential. Furthermore, the main hubs of the Seoul International District towards the left flank (COEX and GBC site) and hubs on the right-hand side (Jamsil Sports Complex and Han River) are cut off by Tancheon Stream, making it hard to access on foot.
- Against this backdrop, this design competition is open to restore the natural environment at the water's edge around Tancheon Stream and Han River, to create a quality waterfront leisure-cultural space equipped with various facilities and programs, and to pool creative and actionable ideas to revamp pedestrian accessibility to the Seoul International District.

[Project area for the ecological and leisure-cultural space within Seoul International District (※the scope of the project is subject to change as per negotiations with relevant departments)]



2. Design Competition Title

International Invited Design Competition for Ecological and Leisure-cultural Waterfront Space in Seoul International District

3. Sponsor

Seoul Metropolitan Government

4. Competition Type

International invited design competition (less than 7 teams to be short-listed)

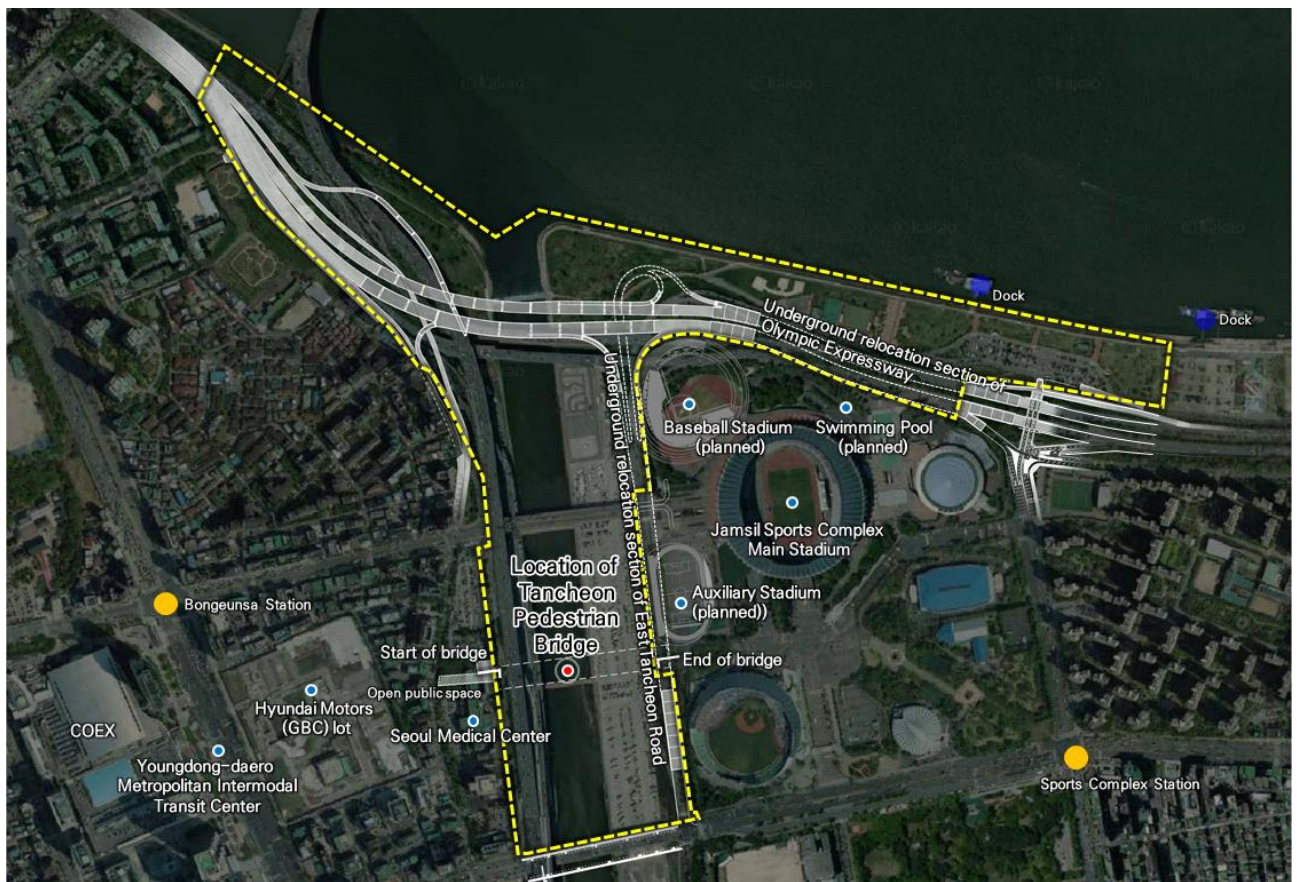
5. Competition Schedule (tentative)

Public Notice & Distribution of Guidelines	8/29/2019. 10:00
Submission of Design Proposals	11/22/2019. 10:00 ~ 17:00
Winner Announcement	11/28/2019

6. Project Site Details

- (1) Location: An area spanning Samseonggyo Bridge at Tancheon Stream and the channel junction with Han River
 - (2) Project Area: Approx. 630,000m²
 - (3) Main Uses: Waterfront leisure-cultural spaces and a pedestrian-friendly bridge that is iconic of the Seoul International District
 - (4) Construction Cost: Approx. KRW 91.7 billion
 - (5) Design Cost: Approx. KRW 5.9 billion
 - (6) Design Period: December 2019 - May 2021 (18 months)
- ※ Construction cost and design cost might be changed at the announcement of the competition in accordance with the process of public sector.

[Project Site (※ the scope of the project site is subject to change as per negotiations with relevant departments)]



7. Design Objectives and Key Tasks

<p>[Nature] Create a space that brings back to the inherent characteristics and appeal of Tancheon Stream and Han River</p> <ul style="list-style-type: none"> • To connect the flow of water and curb water pollution by remedying the drop at the junction between Han River and Tancheon Stream • To restore a well-balanced natural habitat by improving and utilizing natural waterfront areas • To improve safety and ease of maintenance, keeping in mind the possibility of floods
<p>[Leisure and Culture] Establish memorable waterfront spaces where citizens and people from across the world can come to relax and experience different activities</p> <ul style="list-style-type: none"> • To propose new facilities and programs for waterfront activities and tourism along the Han River • To propose unique waterfront facilities and programs that showcase the endemic environment of Tancheon Stream • To propose facilities and programs that can promote nighttime activities
<p>[Accessibility] Create an easily accessible pedestrian-friendly space</p> <ul style="list-style-type: none"> • To build integrated pedestrian pathways to provide easy access, while taking into consideration potential future land use and infrastructure improvements in the vicinity • To install a pedestrian bridge at Tancheon Stream to join the major pedestrian routes in the Seoul International District • To establish pedestrian access routes and balanced eco-friendly/green transportation means that connect to the main public transportation stations

8. Awards

Rank	Award Details
1st prize (1 team)	Contract award for the schematic design and construction documentation for Ecological and Leisure-cultural Waterfront Space and a Pedestrian Bridge
2nd prize (1 team)	KRW 100,000,000
3rd prize (1 team)	KRW 50,000,000
Honorable mention (2-4 teams)	KRW 25,000,000 each

9. Jury

- Byeonggeun Kang (Chairman of the Jury Committee, Professor emeritus, Konkuk University / Architecture)
- Sehun Kim (Professor, Seoul National University / Urban Design)
- Jeonghan Bae (Professor, Seoul National University / Landscape Architecture)
- Gyeongbaek Baek (Professor, Hankyong National University / Civil Engineering)
- Andrew Fassam (Senior Director of Urban Design, Singapore Urban Redevelopment Authority)
- Dennis Pieprz (Chair of Design, Sasaki Associates)

10. Official Website & Contact

Official website: <http://project.seoul.go.kr>

Main contact: Organizing Committee SIDW2019@daum.net